

# Replacing the disk drive of a Sanyo Wavy PHC-70FD(2)

Original by: Bas Kornalijslijper

Translated by: Bart Hamer



## Warning:

The most important part in the computer is the printed circuit board (PCB). Parts can be replaced, but not the PCB. Do not try to unsolder the parts, but cut them loose and then remove the solder pins. The use of IC sockets is recommended.

The replacement disk drive(s) must be suitable for use in an MSX computer and correctly configured for use as an A or B drive. There are several different types of disk drives used in the Sanyo Wavy PHC-70FD(2) and it is recommended to use a new drive of the same brand, so that the bracket and eject button can be transferred. You could use any other brand, but then you will probably need to cut a hole in the computer case. The most commonly used disk drives are: Teac, Mitsumi and Y&E-Data. The power supply for the original drive(s) is integrated into the 34-pin connector on the motherboard. The disk drive used in this manual requires a separate power supply, which will be the case with almost all replacement drives.



The Sanyo Wavy PHC-70FD MSX-2 computer.

## Requisites:

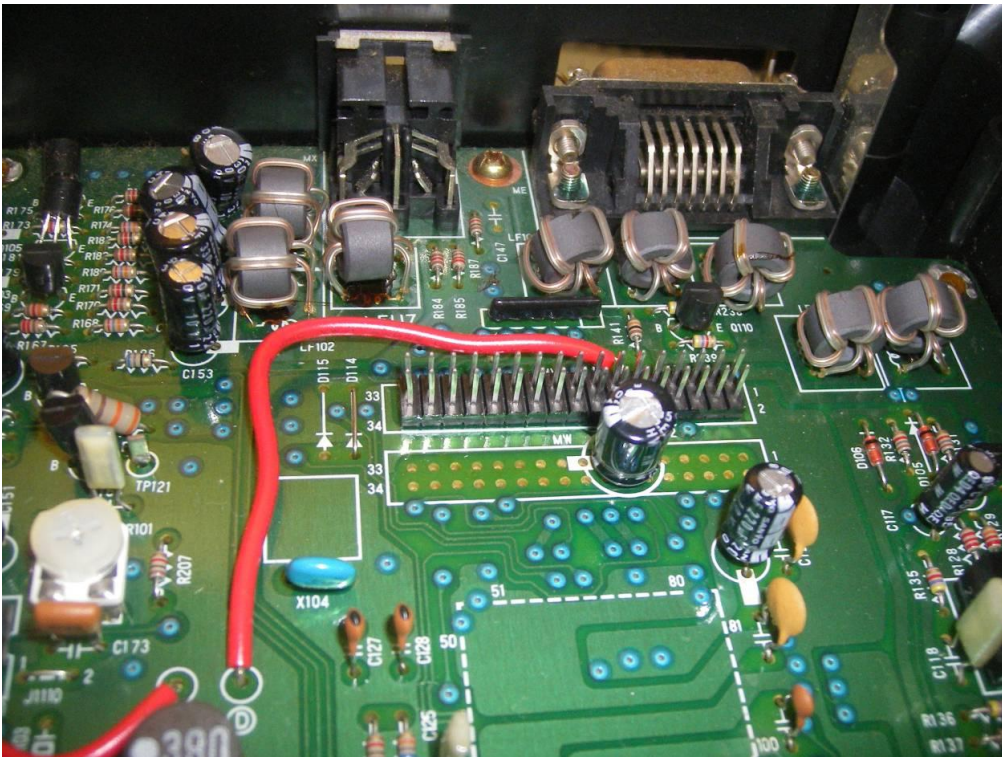
- Disk drive(s) suitable for MSX and correctly configured as A- or B-drive.
- For each disk drive to be replaced, a disk drive cable with 4-pin power connector. All wires can be removed, except for pin 1.

## Disassembly:

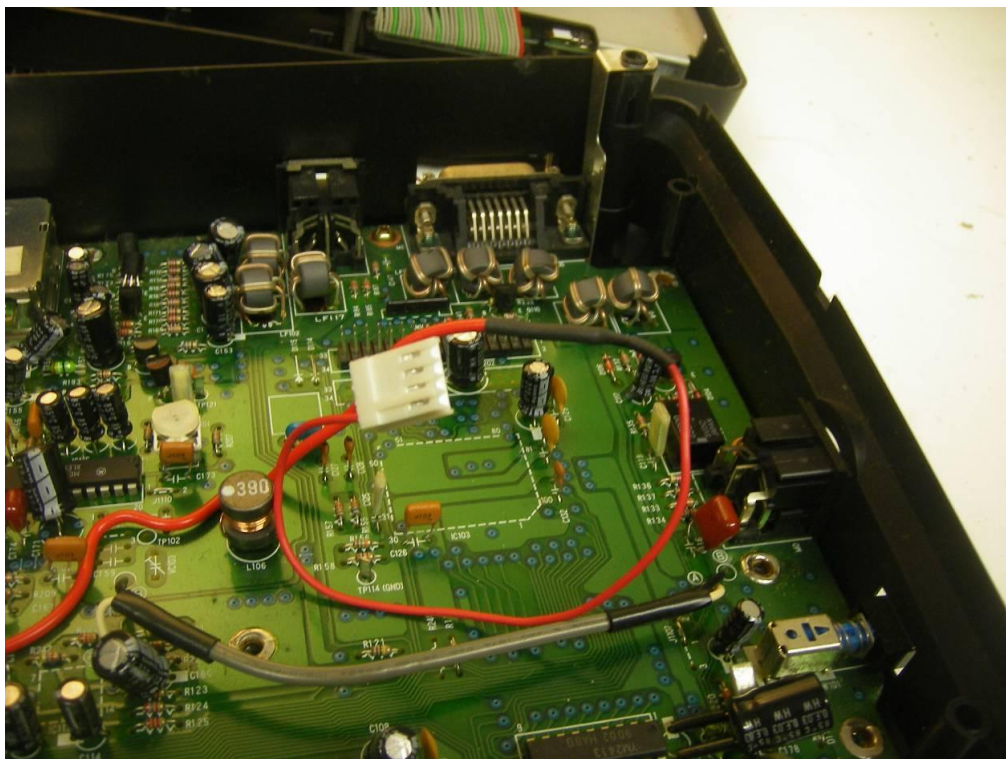
- Remove the cover.
- Unscrew the bracket with the disk drive(s) from the cover.
- Unscrew the disk drive(s) from the bracket.
- Remove the bracket with dust cover from the original disk drive(s).
- Remove the eject button from the original disk drive(s).

## Mounting the disk drive(s):

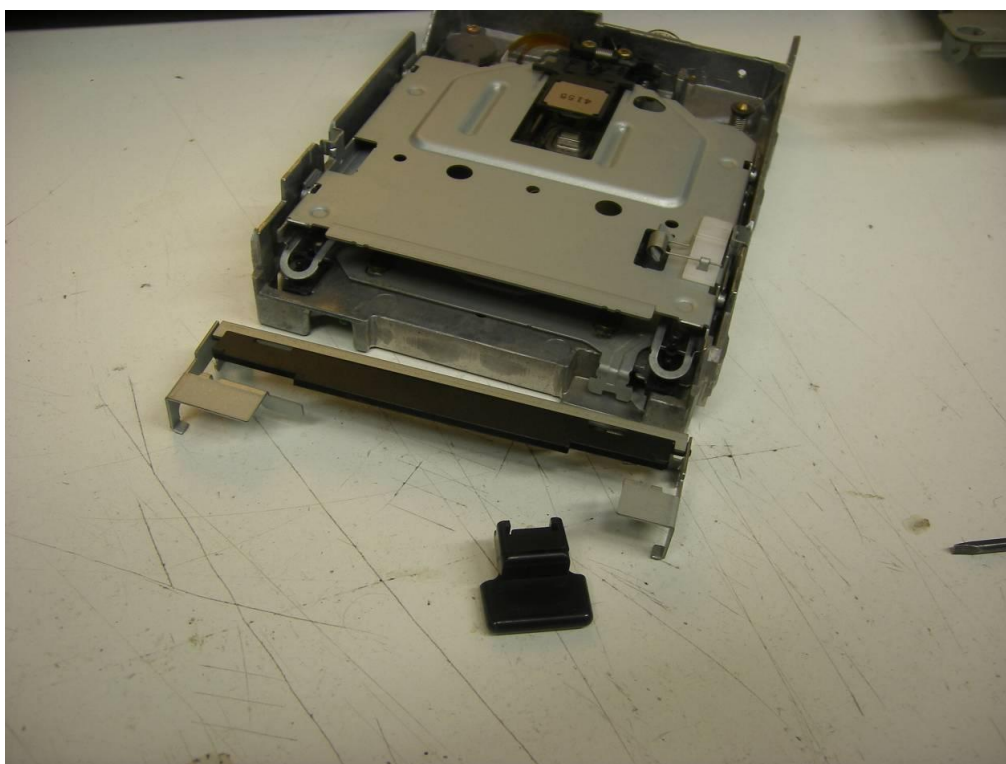
- Cut the red wire on the main board, close to the connector for the disk drive cable.
- Extend this wire with one or two cables with disk drive power plug, depending on the number of disk drives to be replaced.
- Remove the front and the eject button from the new disk drive(s).
- Mount the eject button and the bracket of the original disk drive(s) with the dust cover on the new disk drive(s).
- Mount the disk drive(s) on the bracket.
- Connect the 34-core ribbon cable and the power plug(s) to the disk drive(s).
- Screw the bracket with the disk drive(s) to the cover.
- Connect the 34-core ribbon cable to the main board.
- Close the cover using the screws.



The red wire supplies 5V DC to the original disk drive(s).

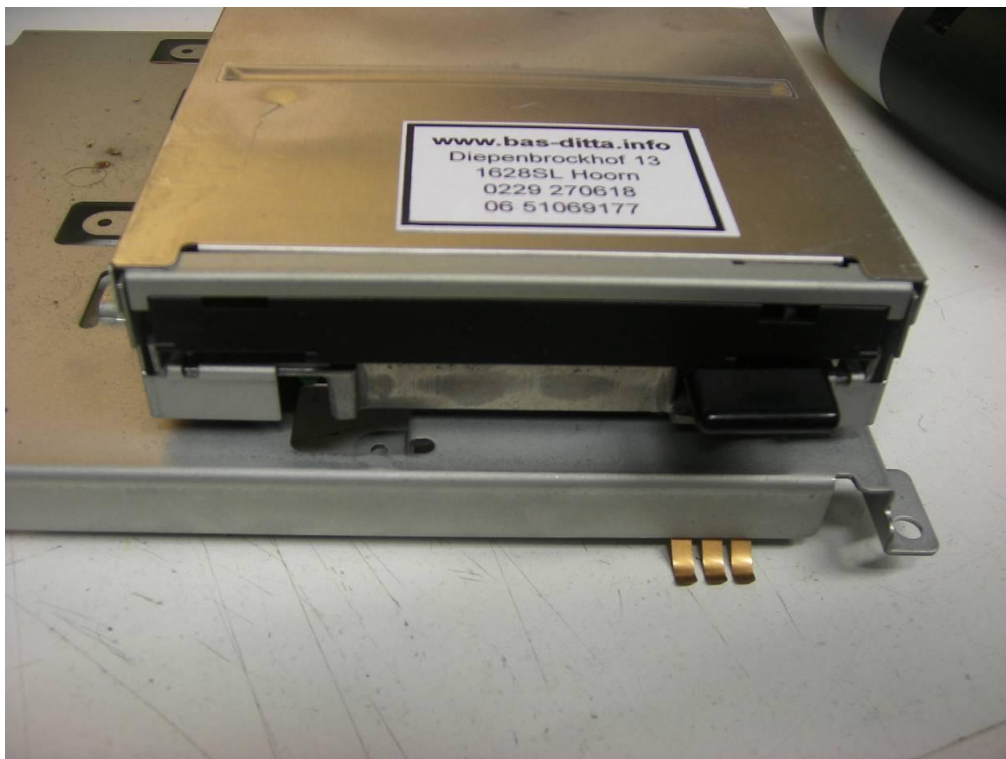


The wire has been cut and extended with a cable with a disk drive power plug.



The original drive with the eject button and bracket with dust cover removed.





The new disk drive is mounted on the bracket.



The connected replacement disk drive.